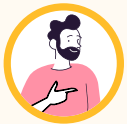


IBDP Environmental Systems and Societies


Teacher to Teacher Tips

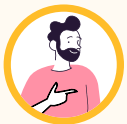
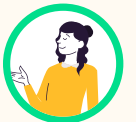
Kognity is designed to help you prepare your students for success in their studies, while saving you time in the process. We have taken some of the most frequently asked questions from IBDP Economics teachers and asked other IBDP Environmental Systems & Societies teachers to provide the answers to them. Explore them below!



How do students learn the subject specific definitions needed?

Definitions can be found in green boxes throughout all sections. Students can start a glossary in the notebook feature to collect all of the definitions in one place.

 **Definition**



How does Kognity support students to do well in paper 1?

Within “Topic 1: Foundations of environmental systems and societies” there are two paper 1 exam-style questions. These can be used towards the end of the course as they tend to cover numerous topics. Furthermore, students can also find a paper 1 section within the Exam Guide section of the textbook.

1. Foundations of environmental systems and societies		
Question 1.1	Paper 2	9 marks
Question 1.2	Paper 2	10 marks
Question 1.3	Paper 2	7 marks
Question 1.4	Paper 2	10 marks
Question 1.5	Paper 2	7 marks
Question 1.6	Paper 2	9 marks
Question 1.7	Paper 1	35 marks
Question 1.8	Paper 1	35 marks
Question 1.9	Paper 2	20 marks


Question preview ✕

2 of 9 Paper: 1 Marks: 35

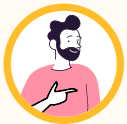
Question

Be Aware
This is a Paper 1 Case study, hence has questions covering more than one topic.

Case study - The Great Barrier Reef



Add Question ← Previous question Next question →



How does Kognity support students to do well in paper 2?

There are numerous exam-style questions for the students to access that prepare them from success in paper 2. Any question worth 20 marks are extended response questions, while questions with less than 20 marks are short answer questions from section A of paper 2. In both cases the questions are in the format of IB questions and have a full mark scheme. Students can also make use of the paper 2 section within the Exam Guide section of the textbook.

1. Foundations of environmental systems and societies		
Question 1.1	Paper 2	9 marks
Question 1.2	Paper 2	10 marks
Question 1.3	Paper 2	7 marks
Question 1.4	Paper 2	10 marks
Question 1.5	Paper 2	7 marks
Question 1.6	Paper 2	9 marks
Question 1.7	Paper 1	35 marks
Question 1.8	Paper 1	35 marks
Question 1.9	Paper 2	20 marks

Question preview ✕

3 of 5 Paper: 2 Marks: 10

Question

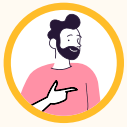
The effects of vegetation cover on the impacts of rainfall was investigated in Mount Mort in Queensland, Australia.

Table 1. Results following a 54mm storm at three sites (A, B and C) at Mount Mort. Source: (Queensland Government)

Site	A	B	C
Percent vegetation cover (%)	87	69	6
Total runoff from storm (mm)	1.5	14	38
Percent of rainfall run off (%)	3	26	70

Add Question ← Previous question Next question →





How does Kognity help train students to do well in the Internal Assessment?

Kognity ESS comes complete with an Internal Assessment guide that walks students through all elements of the Internal Assessment. This ranges from general background information on the IA and why it is used, to sample research questions and data collection techniques.

9.1		SUBTOPIC 9.1	Internal Assessment guide	Completed activities
	Introduction	9.1.0	2 / 6	>
	Student responsibilities	9.1.1	0 / 6	>
	Teacher responsibilities	9.1.2	0 / 6	>
	Identifying the context	9.1.3	0 / 6	>
	Planning	9.1.4	0 / 6	>
	Results, analysis and conclusion	9.1.5	0 / 6	>
	Discussion and evaluation	9.1.6	0 / 6	>
	Application and communication	9.1.7	0 / 6	>
	Sample research questions (T1&2)	9.1.8	0 / 6	>
	Sample research questions (T3&4)	9.1.9	0 / 6	>
	Sample research questions (T5&6)	9.1.10	0 / 6	>

