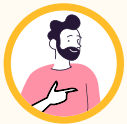


IGCSE Geography

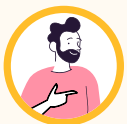
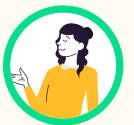
Teacher to Teacher Tips

Kognity is designed to help you prepare your students for success in their studies, while saving you time in the process. We have taken some of the most frequently asked questions from IGCSE Geography teachers and asked other IGCSE Geography teachers to provide the answers to them. Explore them below!



Does Kognity's IGCSE Geography book cover the syllabus entirely?

Yes. The Geography book is vetted by the CAIE and every unit has learning outcomes carefully crafted from the Cambridge IGCSE syllabus objectives. The textbook can be used together with the current syllabus.



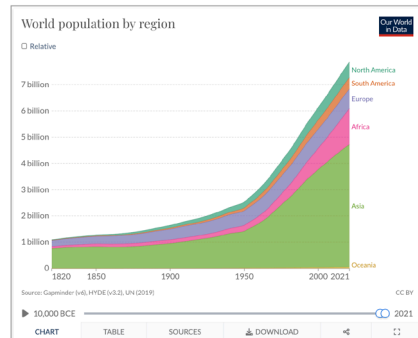
Is the book just reading material like a regular textbook?

No, Kognity's book is not like a traditional textbook. The book has interactive content, videos, models, and auto-graded questions that makes learning engaging either collaboratively or independently.

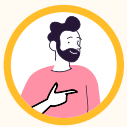
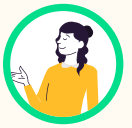
World population

Population is defined as all the inhabitants of a specific place, whether that be a village, town, city, a country or even the world.

In the time it has taken you to read this sentence, the world's population will have increased by approximately 30 people. That is because the world's population is growing by an estimated 78 million people per year. By the end of 2022 it is likely that the world's population will exceed 8 billion. This is even more incredible when you consider that the population less than 100 years ago, in 1925, was only 2 billion (**Interactive 1**).



Interactive 1. World population growth (years 1820 to 2019).



I love assigning Kognity as home extension work, but how do I know if my students are doing the reading?

Assigning Kognity reading to augment your in class discussion is key to their understanding! By viewing your class Insights you can see which students “opened” the text, when they opened it and which sections they have viewed. In order for your students to get “credit” for completing the section reading, they must complete the section questions at the end of each section.

Textbook statistics

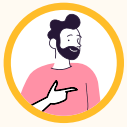
Sections only show if the student has opened the section.
Sections turn green when they have been completed.

Total sections completed: **4 / 57**

Section status	Section name	Last opened	First completed
Completed	0.0.3 Contributor list	2022-06-13	2022-07-19
Completed	1.1.0 The big picture	2022-03-30	2022-06-08
Completed	0.0.2 Collected Case Studies	2022-03-30	2022-07-19
Completed	0.0.1 Introduction and key features	2022-03-30	2022-07-19

No more sections





How do I ensure that my students get the best of the Case Studies as it comprises 21 marks out of the total of 75?

After reading every case study, students can copy the highlights-statistics and place specific references into their Kognity notebook into an abridged case study they can quickly make reference to in preparation for their exam.

1.1 Population dynamics

Case study: Indonesia

0/10 Students have completed this section

[View in the old textbook](#)

[Create assignment](#)

Indonesia is an island nation, located in Southeast Asia and Oceania between the Indian and Pacific oceans (**Figure 1**). It is the world's largest island country (there are over 6000 inhabited islands) and the fourteenth largest overall by area. It also has the fourth largest population in the world.



Figure 1. Location of Indonesia.



How can my students practice with standard past papers in paper 1?

Kognity's platform includes exam style questions crafted by the content writers in line with the IGCSE standards, even though the procedure in awarding marks may be different.

Exam-style questions

Exam-style questions become available once you have received them in an assignment from your teacher.

0. Introduction

1. Population and settlement

2. The natural environment

3. Economic development

The exam-style questions, example answers and mark schemes that appear in this digital textbook were written by the authors. In examinations, the way that marks are awarded may be different.



Is there a way I can keep track of my student's work and progress?

Yes! In order to keep tabs on your students' work within the text, you can view data Insights from the main home screen of each corresponding section. The Questions tab is extremely useful for keeping track of student engagement as well as formative assessment! By clicking on a student you can view all of the following instantly:

- The last time they opened the text
- The last section they viewed
- The last set of "section questions" they completed
- The total number of questions they have completed including number correct and incorrect

